



GAT MONTHLY MEMBERSHIP PROGRESS REPORT

Results as of: 6/30/2023

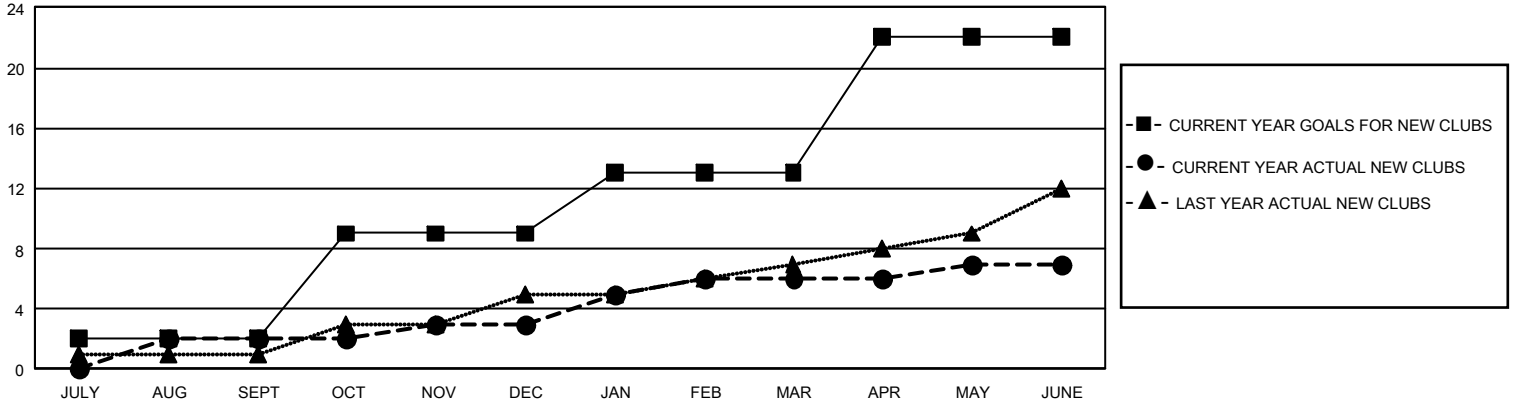
GMT Constitutional Area 1, Group F

REPORT DOES NOT INCLUDE CLUBS IN UNDISTRICTED AREAS.

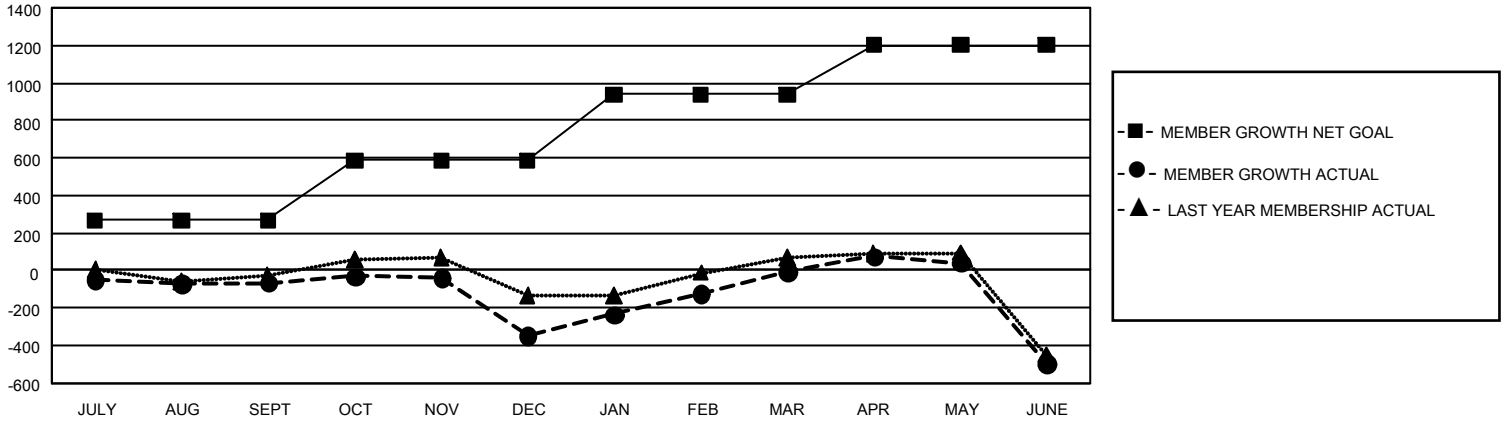
Clubs			
RESULTS FOR 2022-2023			
QUARTER	NEW CLUB GOAL	NEW CLUBS	DROPPED CLUBS
JULY/AUG/SEPT	6	2	5
OCT/NOV/DEC	21	1	14
JAN/FEB/MAR	12	3	0
APR/MAY/JUNE	27	1	14

Members			
RESULTS FOR 2022-2023			
QUARTER	MEMBER GROWTH NET GOAL	MEMBER GROWTH ACTUAL	DROPPED MEMBERS ACTUAL (including transfers)
JULY/AUG/SEPT	268	553	558
OCT/NOV/DEC	318	593	834
JAN/FEB/MAR	353	874	480
APR/MAY/JUNE	262	689	1,119

GOALS AND ACTUAL NEW CLUBS CUMULATIVE



GOALS AND ACTUAL MEMBERS CUMULATIVE



DROPPED CLUBS: 33	518 CLUBS OF 861 ADDED 1 OR MORE NEW MEMBERS	<u>GENDER DISTRIBUTION</u>	
		MALE 13,653 (60.12%) FEMALE 9,025 (39.74%) NON BINARY 0 (0.00%) PREFER NOT TO ANSWER 30 (0.13%)	
<u>DROPPED MEMBERS</u>		CLICK HERE FOR CUMULATIVE MEMBERSHIP DATA	TOTAL FAMILY UNIT MEMBERS 4,167
DECEASED 333 CLUB CANCELLED 252 OTHER 2,406 TOTAL 2,991			FAMILY MEMBERS PAYING HALF DUES 2,173